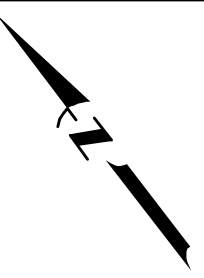
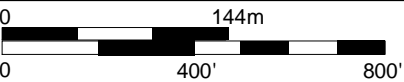


**LEGEND**

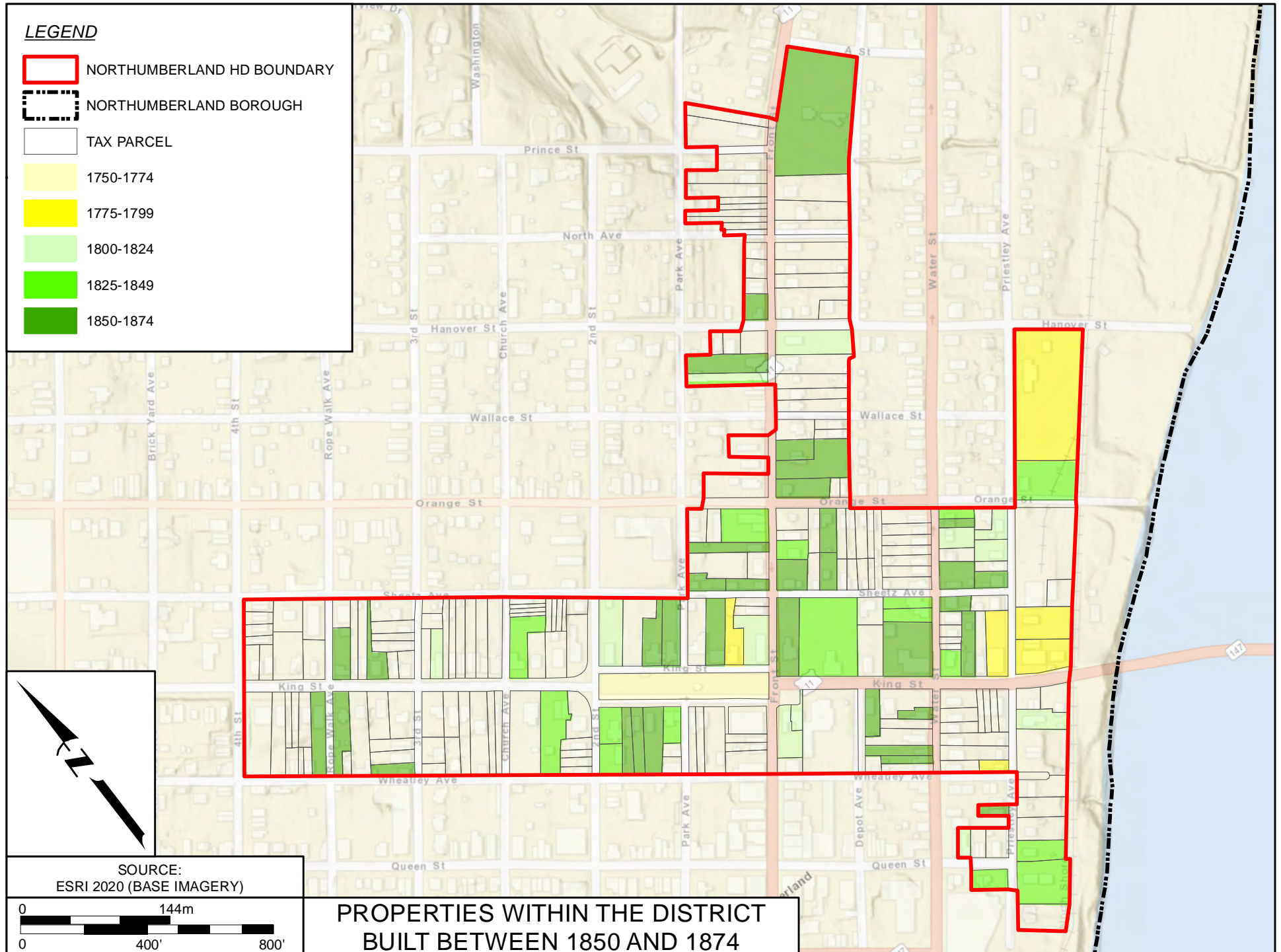
- NORTHUMBERLAND HD BOUNDARY
- NORTHUMBERLAND BOROUGH
- TAX PARCEL
- 1750-1774
- 1775-1799
- 1800-1824
- 1825-1849
- 1850-1874



SOURCE:  
USDA NAIP 2019 (BASE IMAGERY)

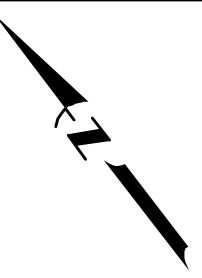


**PROPERTIES WITHIN THE DISTRICT  
BUILT BETWEEN 1850 AND 1874**



**LEGEND**

- NORTHUMBERLAND HD BOUNDARY
- NORTHUMBERLAND BOROUGH
- TAX PARCEL
- 1750-1774
- 1775-1799
- 1800-1824
- 1825-1849
- 1850-1874

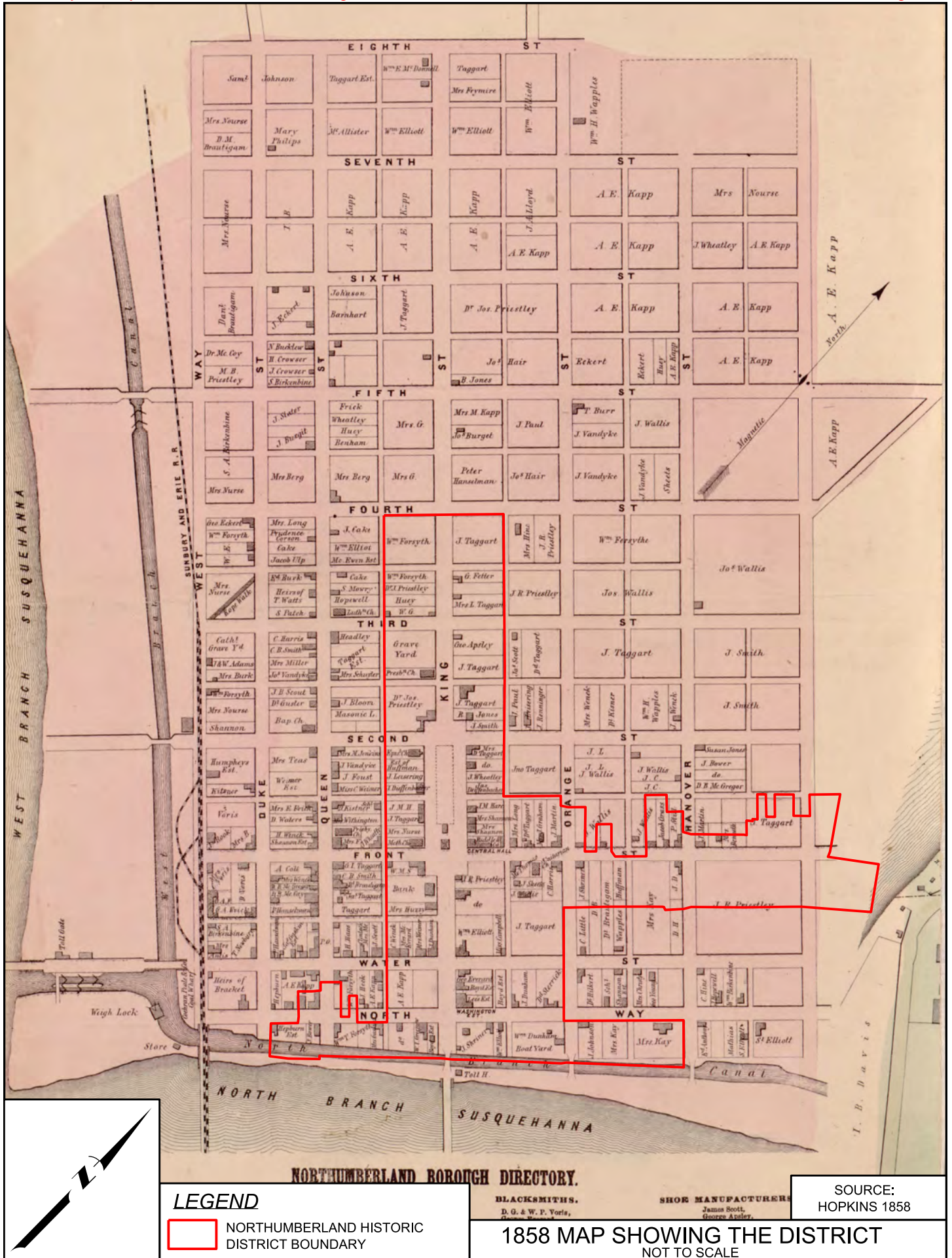


SOURCE:  
ESRI 2020 (BASE IMAGERY)




**PROPERTIES WITHIN THE DISTRICT  
BUILT BETWEEN 1850 AND 1874**

Service Layer Credits: Sources: Esri, HERE, Garmin, USGS, Intermap, INCREMENT P, NRCan, Esri Japan, METI, Esri China (Hong Kong), Esri Korea, Esri (Thailand), NGCC, (c) OpenStreetMap contributors, and the GIS User Community Sources: Esri, Airbus DS, USGS, NGA, NASA, CGIAR, N Robinson, NCEAS, NLS, OS, NMA, Geodastystyrelsen, Rijkswaterstaat, GSA, Geoland, FEMA, Intermap and the GIS user community



**LEGEND**

 NORTHUMBERLAND HISTORIC DISTRICT BOUNDARY

**BLACKSMITHS.**

D. G. & W. P. Voris,  
George Anley.

**SHOE MANUFACTURERS**

James Scott,  
George Anley.


SOURCE:  
HOPKINS 1858

**1858 MAP SHOWING THE DISTRICT**  
NOT TO SCALE



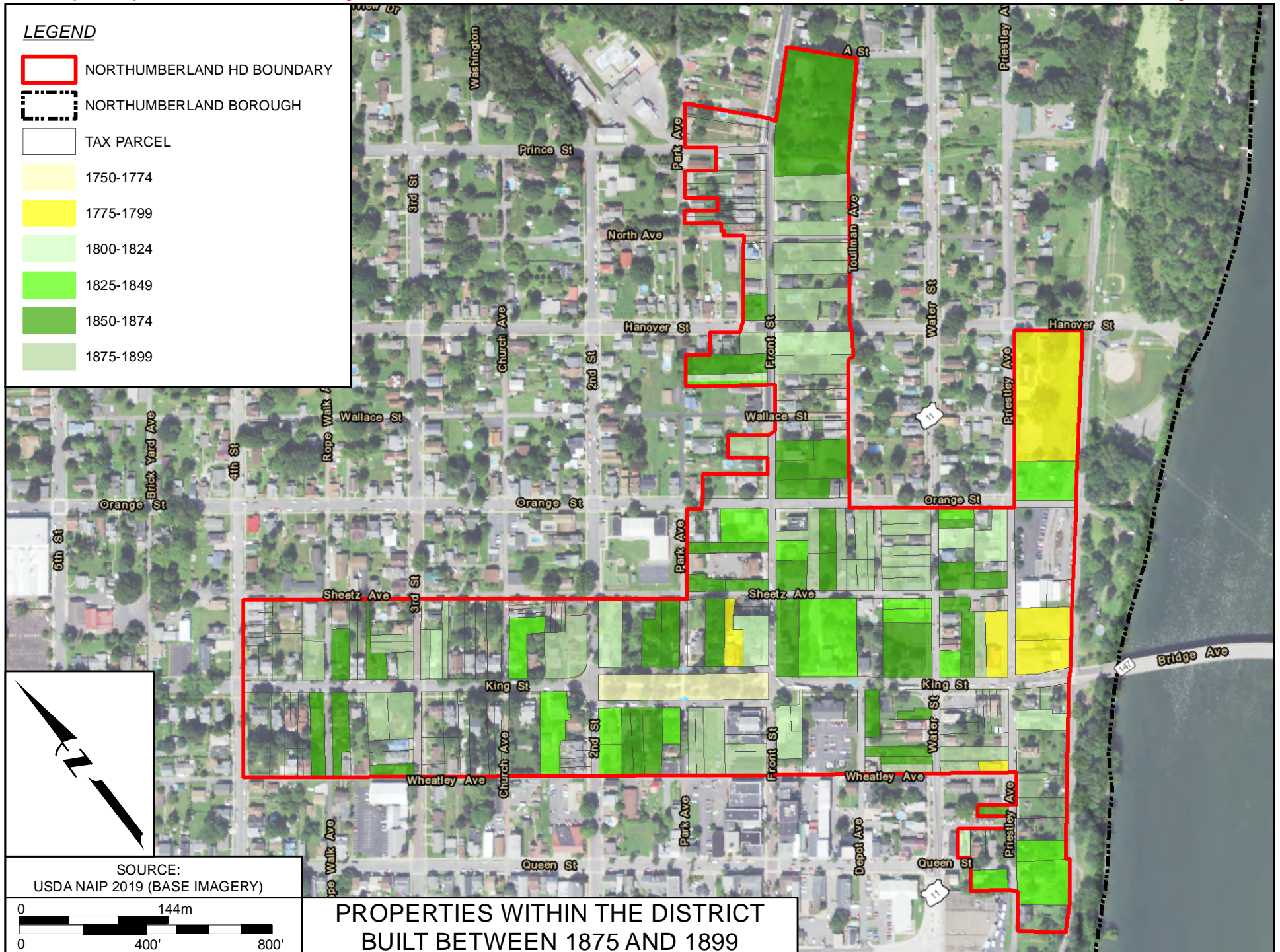
John W. Taylor  
M. Foast.

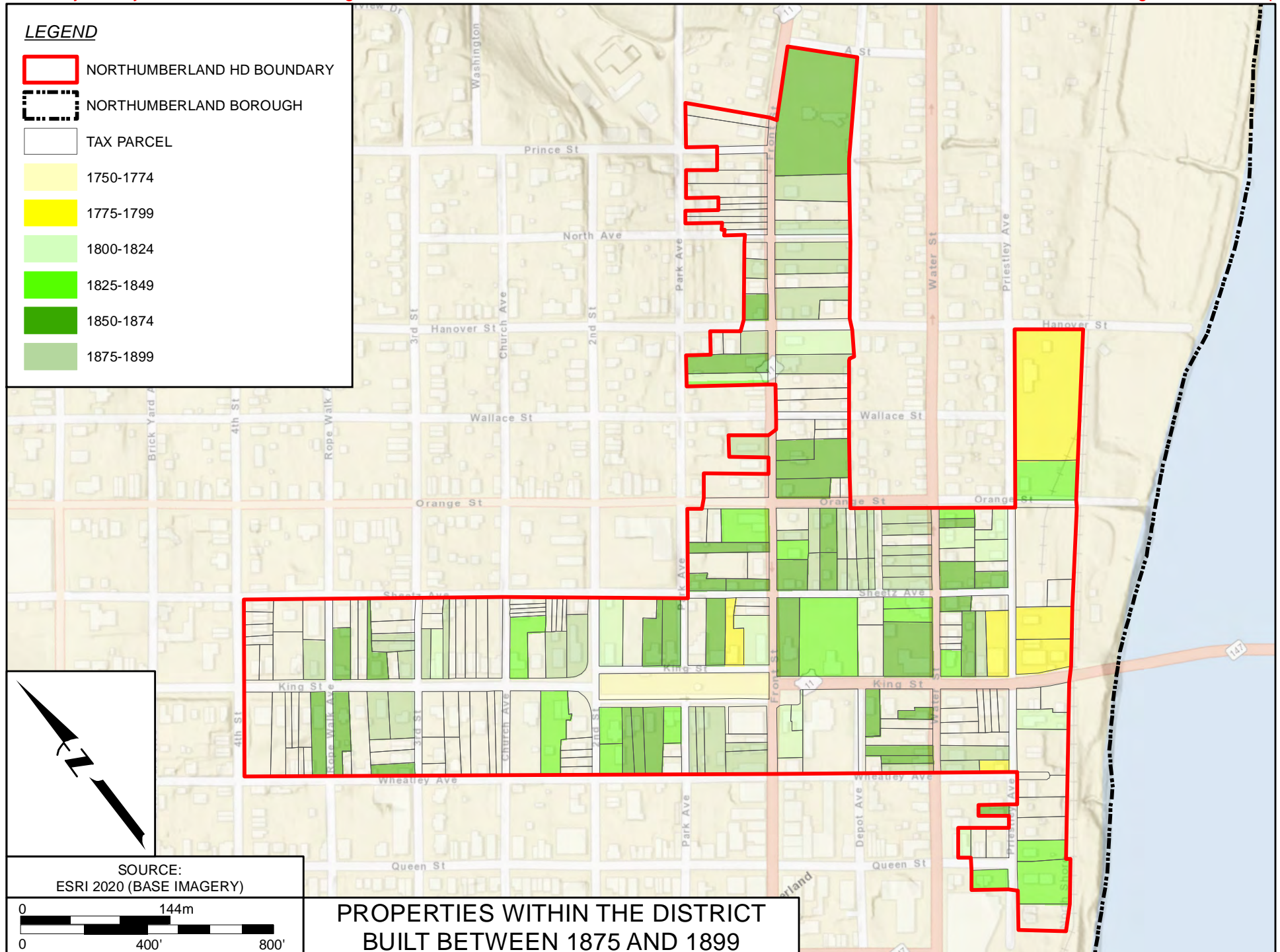
**LEGEND**

 NORTHUMBERLAND HISTORIC DISTRICT BOUNDARY

SOURCE:  
HOPKINS 1874

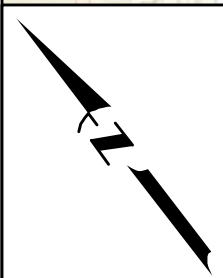
**1874 MAP SHOWING THE DISTRICT**  
NOT TO SCALE





**LEGEND**

- NORTHUMBERLAND HD BOUNDARY
- NORTHUMBERLAND BOROUGH
- TAX PARCEL
- 1750-1774
- 1775-1799
- 1800-1824
- 1825-1849
- 1850-1874
- 1875-1899

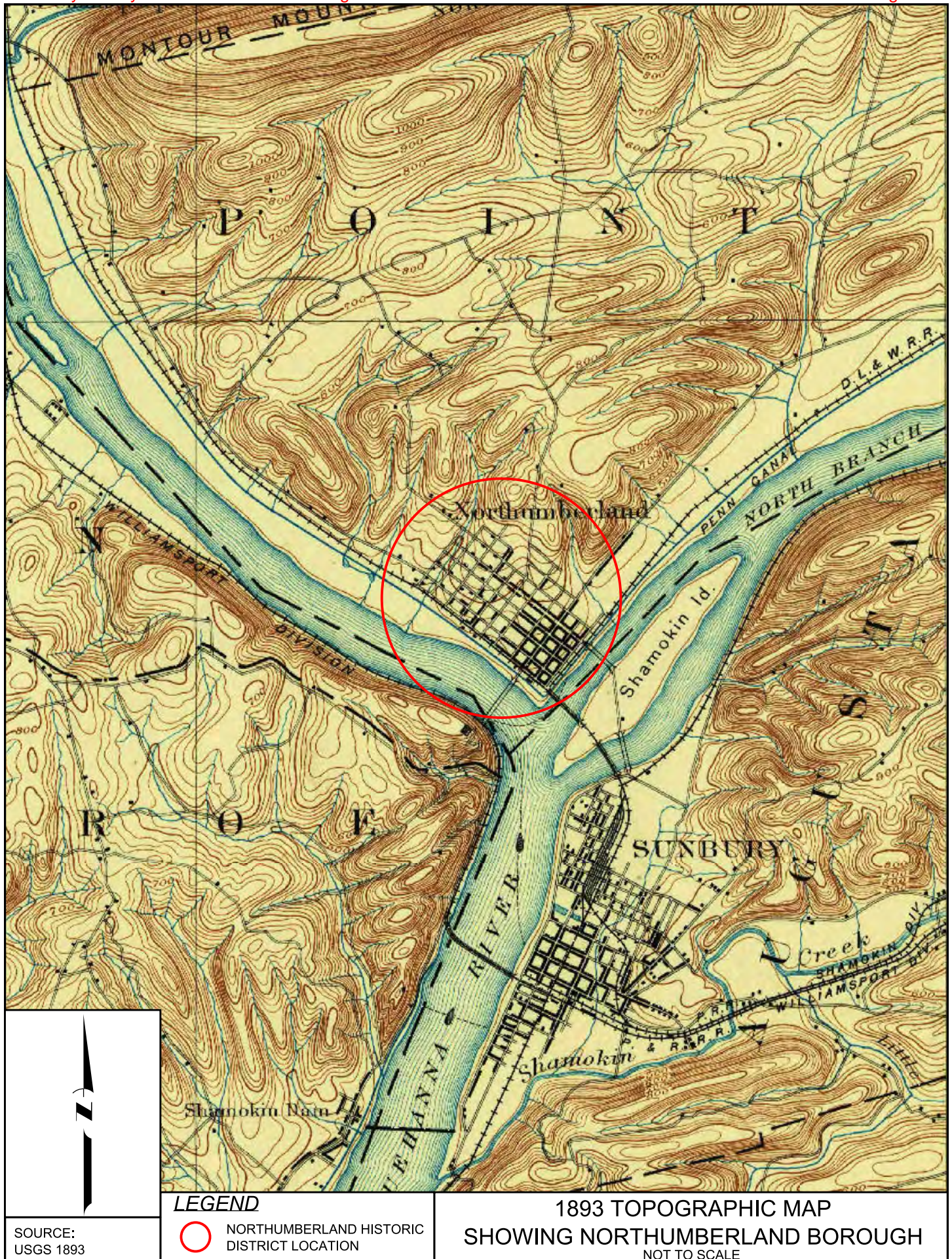


SOURCE:  
ESRI 2020 (BASE IMAGERY)



**PROPERTIES WITHIN THE DISTRICT  
BUILT BETWEEN 1875 AND 1899**

Service Layer Credits: Sources: Esri, HERE, Garmin, USGS, Intermap, INCREMENT P, NRCan, Esri Japan, METI, Esri China (Hong Kong), Esri Korea, Esri (Thailand), NGCC, (c) OpenStreetMap contributors, and the GIS User Community Sources: Esri, Airbus DS, USGS, NGA, NASA, CGIAR, N Robinson, NCEAS, NLS, OS, NMA, Geodatastyrelsen, Rijkswaterstaat, GSA, Geoland, FEMA, Intermap and the GIS user community



SOURCE:  
USGS 1893

**LEGEND**  
○ NORTHUMBERLAND HISTORIC DISTRICT LOCATION

1893 TOPOGRAPHIC MAP  
SHOWING NORTHUMBERLAND BOROUGH  
NOT TO SCALE